

GLASS COCKPIT

NEW!

One look. One touch. One system.

Finally all functions can be integrated into one or multiple touch screens without having to install several other instruments and components. For you, it means a clean and easy-to-use dashboard with enhanced overview and control. Integrated with the EVC system, the Volvo Penta Glass Cockpit gathers all navigation and engine information in one spot.



THE INTUITIVE, PINCH-TO-ZOOM Glass Cockpit touchscreens puts everything you need at your fingertips. Available from 8 to 19 inches.



VOLVO PENTA GLASS COCKPIT takes onboard integration to a whole new level. It allows you to monitor and control all driver information, including navigation, engine data, warnings, alarms and EVC Easy boating features, in one or more customisable, high-tech, touchscreens.



Watch the movie

VOLVO PENTA

GLASS COCKPIT

CUSTOMISE LAYOUTS

Fully customisable layouts, data and gauges allow you to place the information you need to see, right where you want it. Choose between full, half or quarter view, from a variety of data overlays and how it should be distributed between multiple displays.

SMART MODE

You can store layout modes for different needs like "planing" or "docking". Smart mode allows you to switch all screens at a helm in sync from one mode to another, without manually switching each screen separately.

LINK LAYOUTS TO THE JOYSTICK AND CONTROL

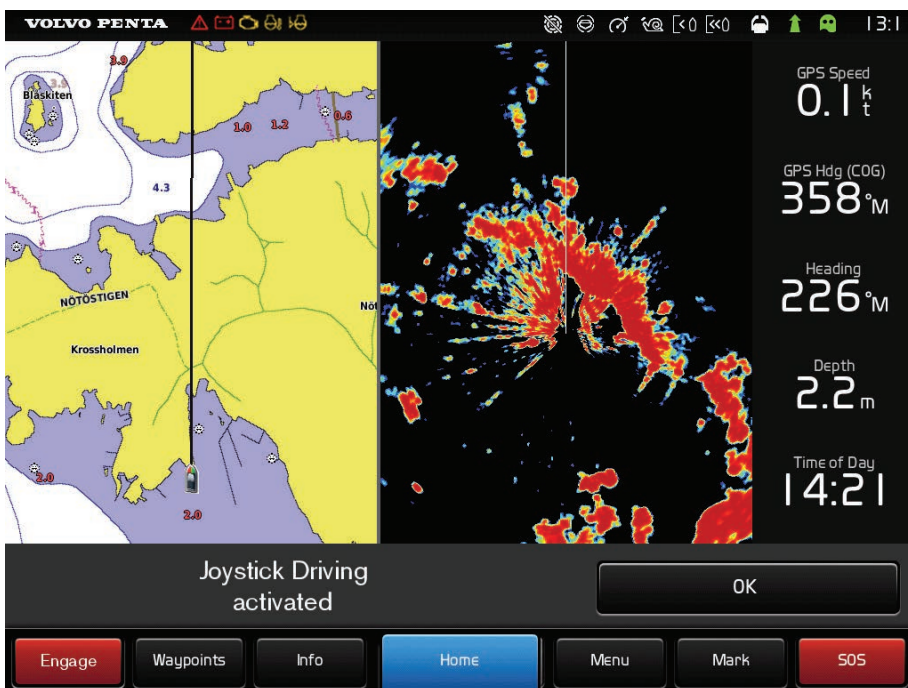
You can link layouts to buttons on the engine control and joystick. When you press an assigned button, all displays switch in sync to the linked layout. For example, when you press the "docking" button on the joystick the layout can change and show a docking camera view.



Full, half or quarter view. Fully customizable layouts allow you to place the information you need to see right where you want it.

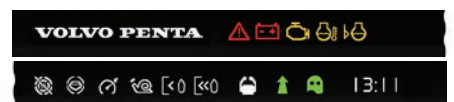


Change layout mode with a push of a button on the joystick.



TOTAL INTEGRATION PROVIDES FULL CONTROL

All engine data, warnings, alarms and EVC Easy boating options such as Autopilot and Joystick driving are monitored and controlled through the Glass Cockpit system. It makes it easier for the driver to focus on what's important at the moment instead of looking at several different displays.



All active functions and alarms are displayed with symbols in the status bar at the top of the screen.

The driver will be notified by sound and pop-up message when functions are activated or de-activated or if any alarm needs attention.

GLASS COCKPIT

"CAR-LIKE" MANNER

With the total EVC integration, all screens light up simultaneously, in a "car-like" manner when you power up the boat. All settings, including instrument dimming, are carried out concurrently at the helm and the fly bridge. You only need to set-up once.

AUTO GUIDANCE

This optional feature searches through all relevant charts to create a visual route you can follow – and avoid shallow water, buoys and other charted obstacles. Linked with the Volvo Penta autopilot, it will not only show you the way, but also take you there!

10 HZ GPS ANTENNA

A smart GPS19x antenna with 10 Hz GPS/GLONASS receiver updates position and heading 10 times per second to display a more fluid vessel movement and dramatically improves your ability to accurately mark and navigate to your waypoints.

ANTI-GLARE AND LED

Anti-glare and LED backlighting makes the Volvo Penta Glass Cockpit screens easy to view in bright sunlight. And auto-dimming provides outstanding visibility at night.

REMOTE CONTROL

An optional remote control can be integrated as a keyboard in the driver's chair or the dashboard for an ergonomic and low-profile controlling solution. This also allows a seamless navigation between multiple displays at a helmstation.



Pinch-to-zoom your chart, radar or sonar screens. With Glass Cockpit you can integrate almost everything you need.

NAVIGATION, COMMUNICATION AND MULTIMEDIA

Volvo Penta Glass Cockpit gives you access to the broad range of Garmin Marine system components and accessories. Almost everything you need can be integrated: radar, sonar, VHS, connectivity, apps and much more. All available at your fingertips, on your Glass Cockpit touchscreens.



SD CARD READER

The card reader provides convenient access to two SD memory card slots for charts and software updates and data back-up. Multiple card readers can be installed. Waterproof magnetic door.

Samples of compatible components and accessories

Garmin radar compatible	Yes
Garmin sonar compatible	Yes
Garmin Marine Network™ compatible	Yes
Supports AIS	Yes
Supports DSC	Yes
BlueChart g2/BlueChart g2 Vision	Yes
3-D map view	Yes
Auto Guidance	Yes
Tide tables	Yes
Sun and moon information	Yes
XM WX Weather & Radio for U.S. & Canada compatible	Yes

For advice and information regarding compatible charts, including BlueChart g2 Vision with Auto Guidance, software updates, compatible sonar and radar systems, communication systems and autopilot components, please contact your local authorised Garmin distributor and dealer.



Remote Control SD Card Reader

GLASS COCKPIT

FEATURES AND BENEFITS:

- Fully integrated with the EVC system
- No additional interface
- Integrates EVC Easy boating options
- Gathers navigation and engine data
- Enhanced overview and control
- Customizable layouts
- Link layouts to the joystick and control
- Intuitive and easy to use
- Status bar with active functions and alarms
- Pop-up text messages
- Auto Guidance – takes you to your destination
- Switch all screens at a helm in sync
- Pinch-to-zoom screens
- Updates position and heading 10 times/sec
- Waterproof according to standard IPX7
- Plug and play system with Garmin components and accessories

FLEXIBLE SYSTEM

The Glass Cockpit system opens up a new world of possibilities for dashboard designs and is flexible enough to install in any boat type. Choose between Multifunction displays (MFD) with integrated processor or slim designed monitors with accompanying black box processor that can be installed in a separate location. All screens can be used alone or in combination of up to three units per helm station. For further flexibility it is possible to mix sizes and combine MDFs and monitors on the same network.

REQUIREMENTS:

- From EVC-E2
- Glass Cockpit are only sold as a complete system together with Volvo Penta engines.

The screens can be installed with either a low-profile flush mount or custom flat mount. The multifunction displays can also be fitted with bail mounting.



Visit Volvo Penta
Glass Cockpit
website

MULTIFUNCTION DISPLAYS (MFD)

Size	Model
8"	MFD 8008
12"	MFD 8012
15"	MFD 8015

MONITORS

Size	Model
15"	Monitor 150
17"	Monitor 170
19"	Monitor 190



The Volvo Penta Glass Cockpit range – Choose between 8", 12" or 15" multifunction displays (MFD) with integrated processor or slim designed 15", 17" and 19" monitors with accompanying black box processor.

Please contact your local Volvo Penta dealer for further information. Please note that products illustrated may differ from production models. Not all models and accessories are available in all markets, and standard equipment may vary between different markets. Every effort has been made to ensure that facts and figures are correct at the time of publication. However, Volvo Penta reserves the right to make changes without prior notice at any time.

VOLVO PENTA

AB Volvo Penta
SE-405 08 Göteborg, Sweden
www.volvopenta.com